



WELCOME!

**MINNEHAHA-HIAWATHA
Community Works Project**



46th Street Area Lighting Project

July 2009



Partners

- The 46th Street Lighting project is a collaboration between Hennepin County and:

The City of Minneapolis



The Longfellow Community Council; and



The Standish Ericsson Neighborhood Association

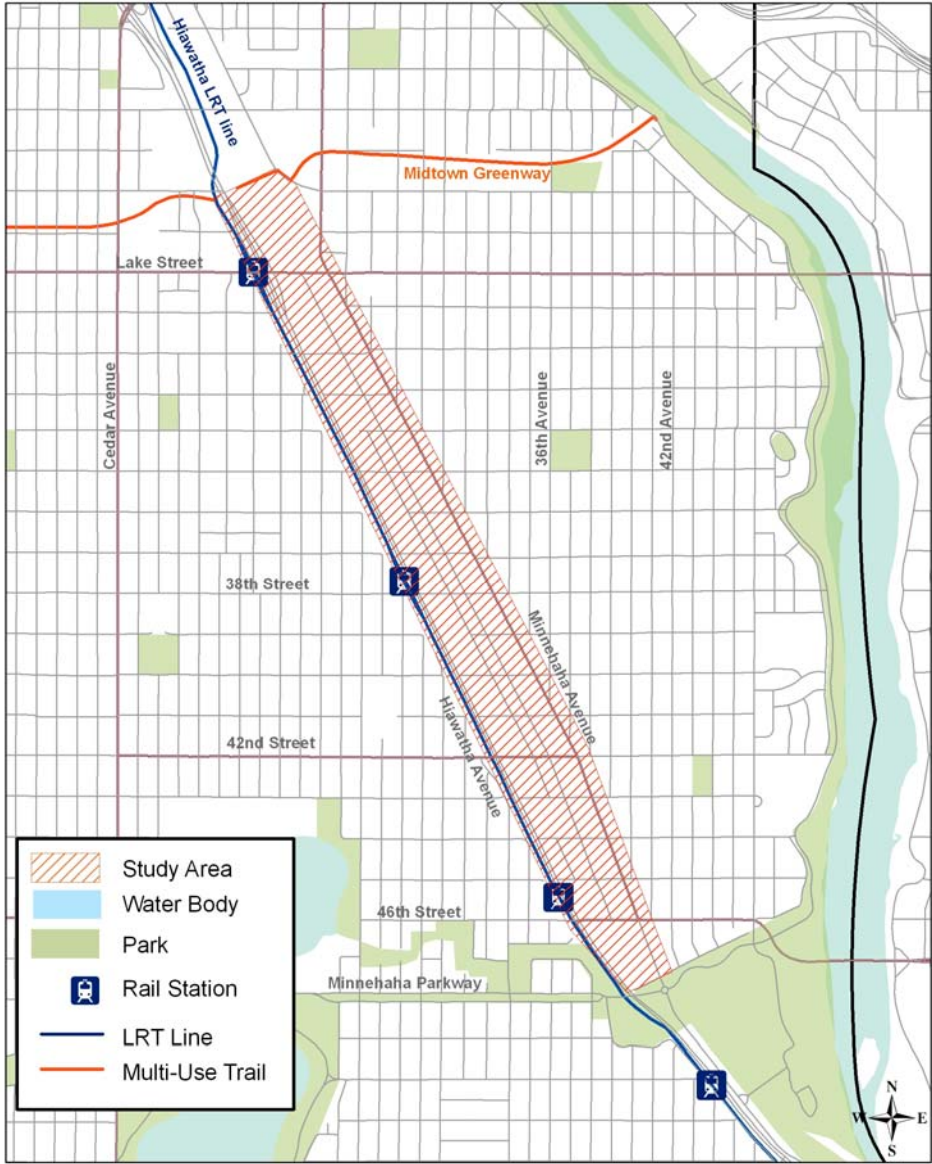


Funding provided by Hennepin County and the City of Minneapolis

Minnehaha Hiawatha Community Works

July 2009

Minnehaha - Hiawatha Community Works Study Area





Hennepin County Community Works Program

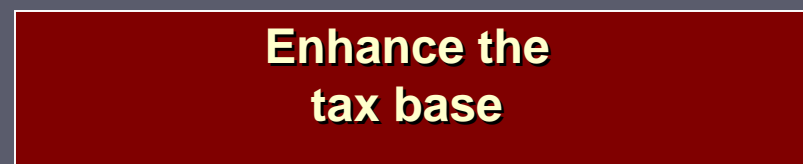
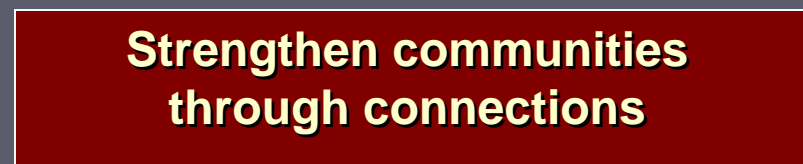
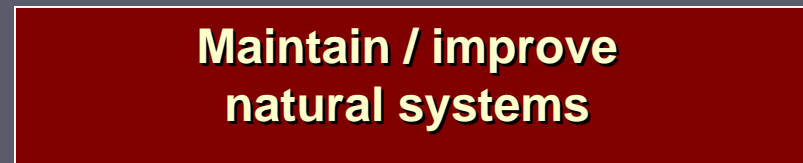


Community Works Concept



***Coordinated
investments in...***

...can be used to:



Community Works Projects

- Midtown Greenway



- Humbolt Greenway



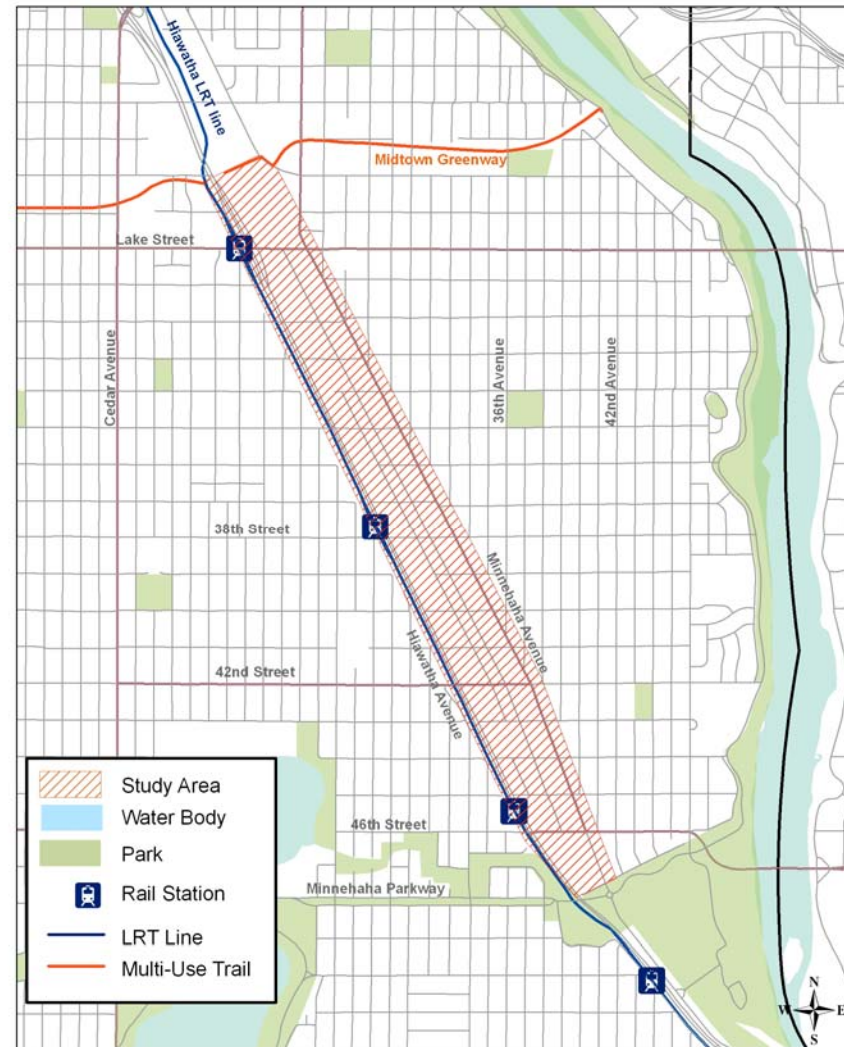
Minnehaha-Hiawatha



Opportunities

- Commercial and employment centers
- Proximity to LRT line
- Proximity to green space and trail connections
- Strong neighborhood / community organizations

Minnehaha - Hiawatha Community Works Study Area

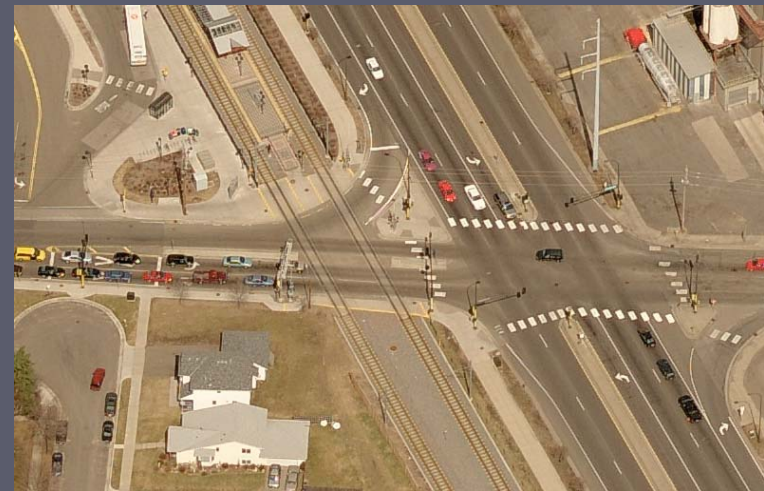


Minnehaha-Hiawatha



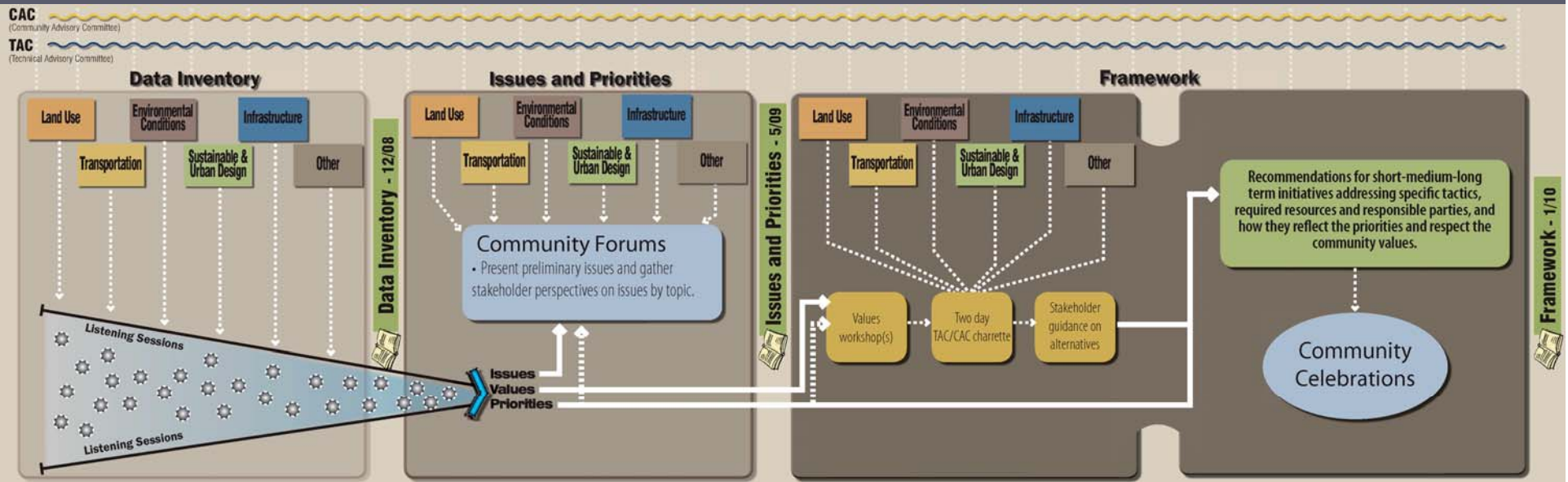
Challenges

- Economic development
- Existing utility and rail infrastructure
- Land use conflicts
- Pedestrian and bike connectivity
- Transportation-system capacity



OVERALL PROJECT PROCESS

- Three key project phases:
 - Data inventory
 - Issues and priorities
 - Framework development -- We are here in the process



PURPOSE OF TODAY'S MEETING

- To share with the community the details of the 46th Street lighting concept.
 - Why are doing it?
 - What is it (where will they be installed, what will they look like, what kind of lights will they be)?
 - How will it be paid for? Will there be assessments?
 - When can we expect it to be built?
- To provide an opportunity for the community to comment on the project.

Why are we doing it?

- Improves the pedestrian realm along a key gateway to the community.
 - Walkability - Safety - Image and appearance
- Creates a stronger LRT connection.
- Creates a safe environment.
- Consistent with Great City Design Team concepts.
- Can happen within existing Right of Way.
- Good use of available capital dollars.
- Is and energy efficient and environmentally sustainable solution.

What is it?

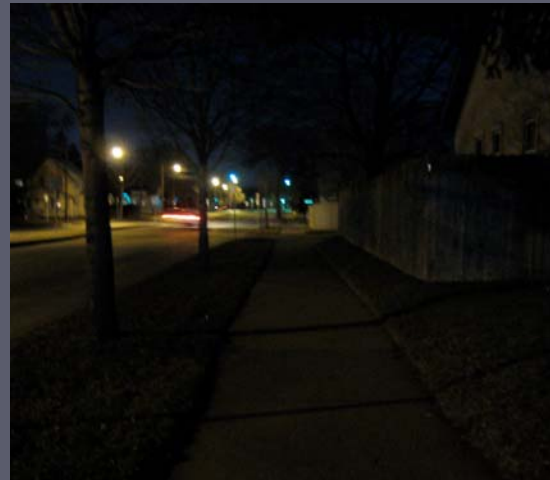
- Pedestrian and Street level lighting improvements along 46th Street from 34th Avenue on the west to 46th Avenue on the East and including 36th Street to the Minnehaha Creek Bridge.



What is it?

- Implemented as a “Pilot” project to study various lighting technologies:
 - Light Emitting Diode (LED)
 - Induction
 - High Pressure Sodium
- Enables the evaluation of key characteristics:
 - Energy Usage
 - Illumination Levels (do they light what we need them to light?)
 - On-going operations and maintenance costs
 - Capital Costs

Existing Conditions















Minnehaha Hiawatha Community Works

July 2009

Light Technology Comparison

- Different technologies have different pros and cons that need to be evaluated.
- Difficult to compare because many factors are involved.

Light Type	High Pressure Sodium (HPS)	Induction	Light Emitting Diode (LED)
Initial Cost	\$	\$\$	\$\$\$
Maintenance Needs			
Energy Used			
Light Color	Yellow	White	White
Lamp Life			
Light Delivery (getting light where you want it)			
Other Notes:	Most light generated per watt.	Instant on for security.	Output lessens over time.

What are the variables?

- Fixture types:
 - full cut off (casts lighting downward to reduce glare and dark sky affect)
 - lantern, acorn, or shoebox fixtures
- Spacing of lighting:
 - depends on (lighting technology and width of street)
 - generally 75' or more between lights
- Pattern of lights
 - staggered or soldier pattern

Fixture Types



Minnehaha Hiawatha Community Works



July 2009

Fixture Types



Patterns



Staggered - west of Hiawatha



Soldier - east of Hiawatha

● Ornamental fixture on 15' pole

■ Shoebox fixture on 30' pole

How will they be paid for?

- Lighting will be paid for out of two funding sources:
 - City of Minneapolis Energy Efficiency Pilot program
 - Hennepin County Capital Improvement Budget
- No property will be assessed for this project
- On going operations and maintenance will be handled the same as they currently are

When can we expect it to be built?

- Next Steps
 - Agreements with Hennepin County and City of Minneapolis
 - Lighting/Electrical Engineering of project
 - Construction Fall of 2009

Question and Answers

- Maps and drawings are provided at the tables.
- Please use post it notes to offer comments and stickers to express opinions.
- Please fill out comment form.
- Staff are here to answer questions:
 - Bill Prince and Steve Mosing - Minneapolis Public Works
 - Patrick Connoy and Robb Luckow- Hennepin County
 - Mark Garner - Minneapolis CPED

Thank You!