



Minnehaha-Hiawatha Community Works Project

December 17, 2012

MHCW Project Coordinating Team



Agenda

1. Goal Discussion

MHCW Project Goal

Build off existing investments in LRT line and Minnehaha Ave. reconstruction to leverage resources to support mobility, economic development, improved natural systems, and enhanced tax base.



Agenda

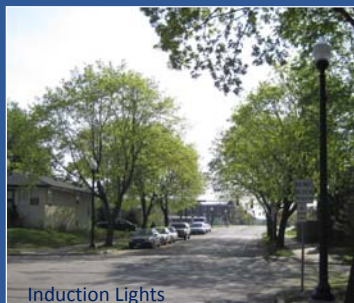
1. Goal Discussion
2. Overview of project activities to date

Completed: 46th St. Pilot Lighting Project

- Partnership of Hennepin County, Minneapolis, Longfellow Community Council, Standish-Ericsson Neighborhood Assoc.
- Improve street lighting for walkers, bikers, transit users, & drivers
- Save energy and reduce emissions
- Reduce operating and maintenance costs
- Determine feasibility of expanding to other locations

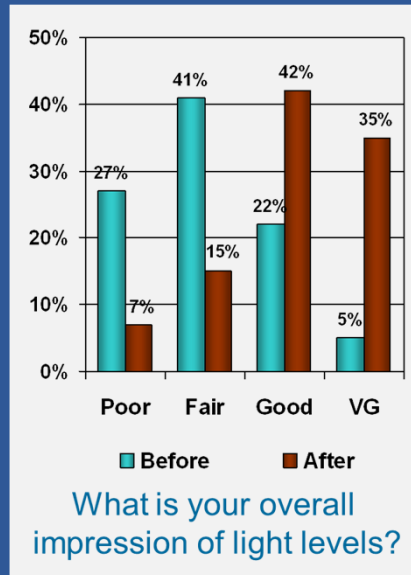


46th Street Pilot Lighting Project



- 43 LED streetlights (6 brands) east of Hiawatha Ave
- 12 induction streetlights (3 brands) west of Hiawatha Ave
- Allow side-by-side comparison of light quality and operation
- \$475,000 – including 20% from Minneapolis and from Local Road Research Board

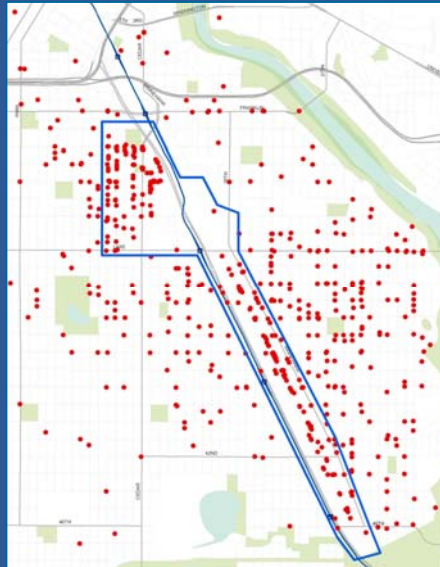
46th St. Pilot Lighting Project – Results



- Energy use reduced more than 50%
- 80% of cost savings results from longer bulb life
 - Reduced maintenance costs
- Payback estimation:
 - 3 - 9 years induction
 - 3 - 21 years LED
- 2 light “failures”

In Process: Hennepin CARE Project

- \$100,000 EPA Award
- 25 partners
- Focus on community environmental and health risks
- Community identifies and prioritizes their concerns
- Develop action plan to address top 3



Hennepin CARE Project

- Air pollution
- Asthma
- Bugs and pests
- Economic Instability
- Energy
- Environmental sustainability
- Health disparities
- Lack of healthy affordable food
- Lack of green, open space
- Lead
- Mold
- Nutrition and obesity
- Pollution from vehicles
- Radon
- Second-hand smoke
- Soil contamination
- Toxics in the home
- Trash
- Unsafe biking and walking environment
- Water quality

Planning: Hiawatha Crossing Improvements

Technical advisory group: Hennepin County, Metro Transit, Minneapolis, Mn/DOT

Issues:

- Wide crossings for peds
- Short crossing times
- Kinked crosswalks
- High vehicle speeds
- Bike, ped, vehicle compliance
- LRT pre-emption / signals



Planning: Hiawatha Crossing Improvements

Goal: Improve crossing experience and safety for pedestrians and bikers at 28th / 32nd / 35th / 38th / 42nd / 46th Streets

Recommendations:

- Reduce crossing distances through bumpouts
- Wider medians
- Straighten and enhance crosswalks
- Meet ADA requirements

Planning: Hiawatha Crossing Improvements

Potential funding

- Hennepin Cty \$250,000
- Mn/DOT \$300,000
- Minneapolis \$250,000

Timeline

- Engineering Winter '12
- Construction Summer '12



Upcoming Activities

Cultural and Historic Interpretation

Create cultural, historical, natural amenity in heart of corridor area



- African American home ownership community
- History of rail corridor and grain industry
- Community space
- Stormwater management demonstration

Upcoming Activities

Cultural and Historic Interpretation Concepts



Upcoming Activities

Rail Corridor Vacation

Work with Canadian Pacific Rail on vacation of freight rail tracks south of 46th Street



- Create green pedestrian / bike connection from LRT station to Minnehaha Park
- Stormwater management opportunities
- Support redevelopment

Leveraged Resources

- US EPA - Community Action for a Renewed Environment
Prioritize and ultimately address environmental health risks
- Minneapolis - Energy Conservation and Emission Program
Street lighting project
- Local Road Research Board - Mn/DOT
Street lighting project
- Transit for Livable Communities - Non-Motorized Transportation Pilot Program
Planning and initial design for Lake Street area trail connections
- Minnesota Department of Transportation*
City of Minneapolis*
Hiawatha Ave pedestrian crossing improvements

Agenda

1. Goal Discussion
2. Overview of project activities to date
3. MHCW Projects and Project Matrix

Project Matrix

MINNEHAHA-HIAWATHA COMMUNITY WORKS - PROJECT TRACKING SHEET			CATALYST PROJECTS
ID	PROJECT	STATUS	RECENT ACTIVITIES
26	Reconstruct of Minnehaha Ave as complete, green street.	HC / Mpls Capital Budgets Construction exp. 2014-15 Minnehaha S. of 46th - Mpls CIP 2014	Reviewing options for bike lane/cycle track along Minnehaha Ave.
27	Implement Hiawatha Ave traffic signal improvements.	Under construction	
28	Improve pedestrian crossings of Hiawatha Ave signalized intersections.	Planning / Design Construction exp. 2013	Community meetings to present latest proposals. Mpls City Council vote 12/12 Mn/DOT funding agreement
31	Plan and build a diagonal greenway connecting Midtown Greenway to Minnehaha Park.		Met with Xcel to discuss opportunities to relocate power lines. Met with CP regarding rail vacation south of 46th Street.
37	Redevelop SW Hiawatha & Lake (2225 E Lake) as TOD with public realm amenities.		School district and developer working on purchase.
39	Reconstruct 38th Street as complete street and neighborhood gateway.	Mpls CIP 2016	
42	Design and build Snelling Ave extension south of 46th Street to Hiawatha Ave.	Mpls CIP 2015/17	Work with CP Rail to vacate rail line south of 46th Street.
44	Reconstruct 46th Street as complete street, green street, and neighborhood gateway.	46th Street Lighting Project (2010)	Part of 46th Street will be reconstructed with Minnehaha reconstruction. Minimal changes expected until Snelling Ave extension constructed.

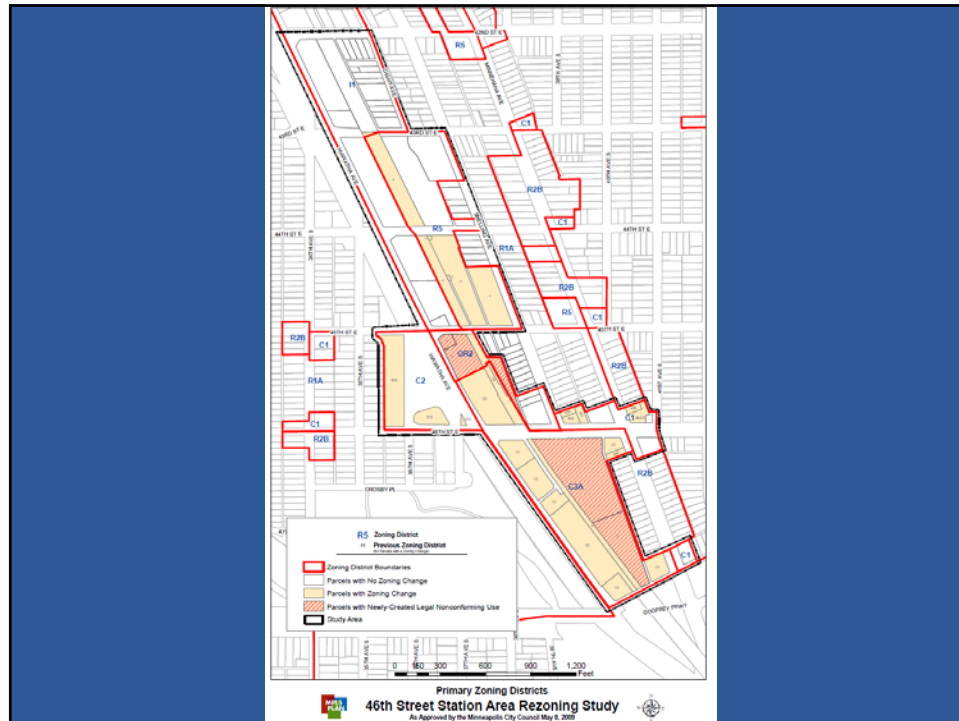
Agenda

1. Goal Discussion
2. Overview of project activities to date
3. MHCW Projects and Project Matrix
4. 46th Street Area Projects

46th Street - Before LRT



Image from the Metropolitan Design Center Image Bank
© Regents of the University of Minnesota. All rights reserved. Used with permission.



Housing Development

- Complete (since 2004): 285 Units
- Under Construction: 149 Units
- Total Opportunity: Approximately 1,500 units



46th Station Area Challenges

Infrastructure

- Street connectivity
- Railway
- Powerlines
- Pedstrian/Bike access
- Stormwater

Market

- Value of existing properties
- Multiple land owners / land assembly



46th Station Area Opportunities

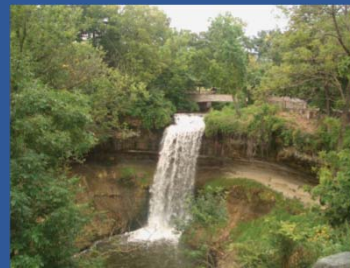
Land use potential

- Underutilized space
- “Large” parcels

Natural resource potential

- Proximity to Minnehaha Falls / Park / Parkway
- Bike and pedestrian trails
- Stormwater management opportunities

Market and retail potential



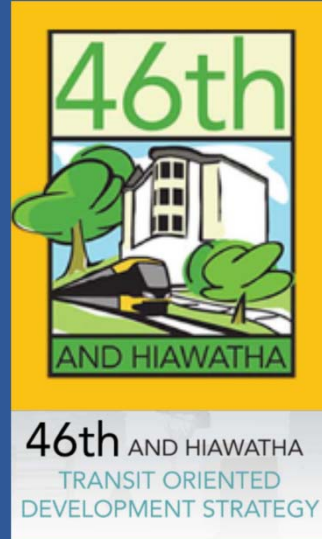
46th Street TOD Strategy

ROLE:

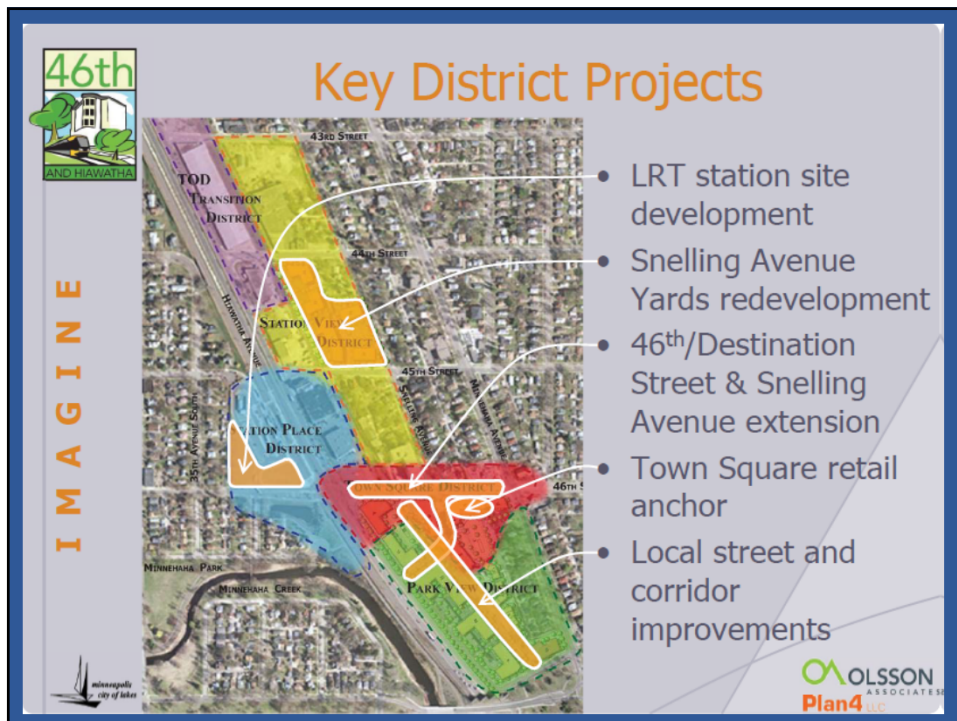
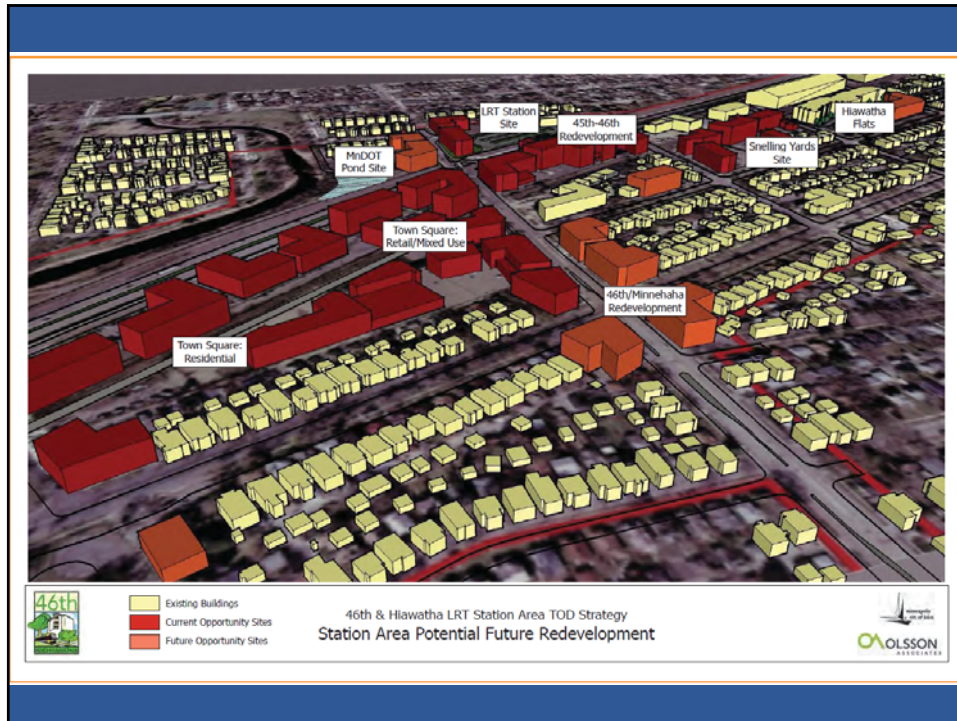
Provide information and propose actions to:

- enhance existing neighborhood assets,
- mitigate barriers to successful plan implementation,
- inform and coordinate public and private projects

that can build local competitive advantages to attract new private investment







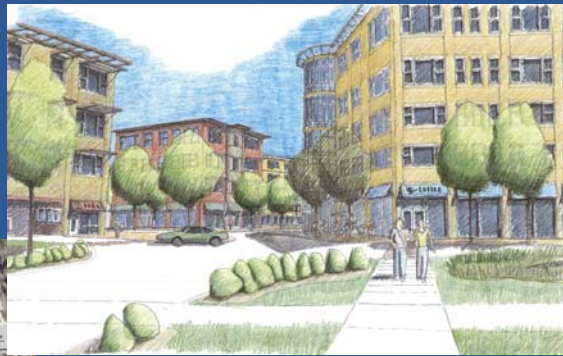
Infrastructure – 46th Street

Green Street
Destination Street



Between Hiawatha & Minnehaha (46th & Hiawatha looking southeast)

Infrastructure – Snelling Ave ext.



Snelling extension & Hiawatha, looking east

Extension of Snelling Ave.
south of 46th Street

Infrastructure – Freight Rail Vacation



Looking north along new “spine street”
and stormwater corridor

46th Street Projects Overview

Completed

- 46th Street Lighting

In Progress

- Rail vacation
- Pedestrian crossings
- Minnehaha reconstruction (design)

Early Coordination

- 46th Street Reconstruction
- Snelling Ave Extension
- HVTL Modernization



46th Street – After LRT

