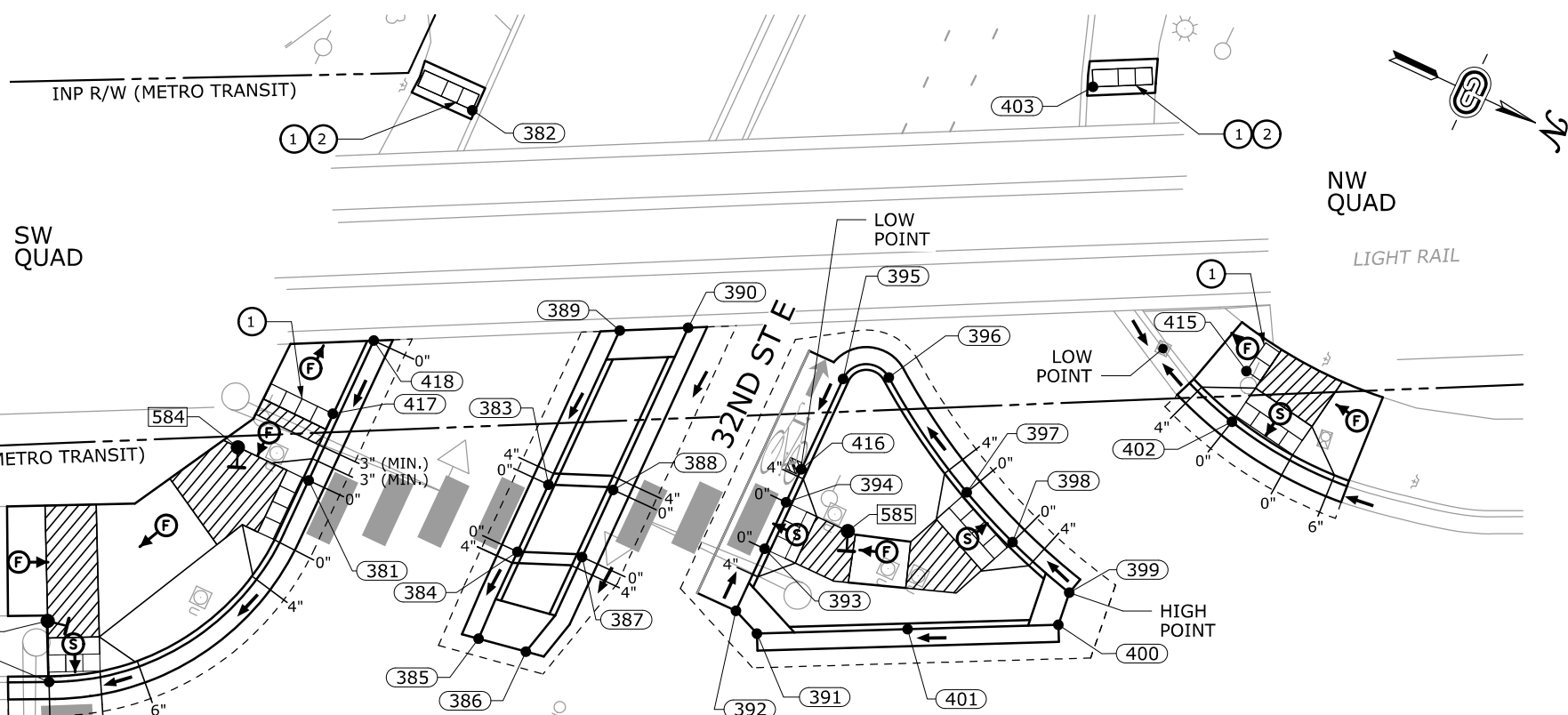


**NOTES:**

- ① FRONT EDGE OF DETECTABLE WARNINGS FOR LRT LINE SHALL BE PLACED A MINIMUM OF 6 FEET FROM CENTERLINE OF NEAREST RAIL OR 17-19 INCHES FROM THE FACE OF THE PEDESTRIAN GATE ARM.
- ② DOMES CUT INTO WALK FOR LRT DETECTABLE WARNING ONLY. ADJACENT SIDEWALK MAY NOT MEET ALL COMPLIANCY CRITERIA.



TH 55 (HIAWATHA AVE)

286

287

HIAWATHACC2

286

287

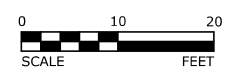
APS PUSH BUTTON STATION			DISTANCE TO FRONT OF LANDING (FT)	DISTANCE TO BACK OF LANDING (FT)	
POINT	STATION	OFFSET			
<b>HIAWATHACC2</b>					
583	286+74.6	95.8	LT	2.0	13.5
584	286+97.3	115.8	LT	8.3	1.9
585	287+68.6	104.6	LT	4.0	1.0

GUTTER CONTROL POINTS				
POINT	STATION	OFFSET	ELEVATION	
<b>HIAWATHACC2 - SW/NW QUAD</b>				
380	286+74.7	88.7	LT	
381	287+05.5	111.7	LT	
382	287+25.5	154.7	LT	
383	287+33.6	110.7	LT	838.77
384	287+29.8	102.9	LT	838.60
385	287+25.1	92.8	LT	838.45
386	287+30.6	91.2	LT	838.60
387	287+37.4	102.2	LT	838.87
388	287+41.2	110.0	LT	839.00
389	287+42.3	128.6	LT	839.10
390	287+50.3	128.8	LT	839.10
391	287+57.7	92.8	LT	838.86
392	287+55.3	95.5	LT	838.78
393	287+58.8	102.7	LT	838.70
394	287+61.4	108.1	LT	838.67
395	287+68.3	122.5	LT	839.06
396	287+73.7	122.5	LT	839.12
397	287+82.6	108.9	LT	839.17
398	287+87.8	103.0	LT	839.19
399	287+94.4	96.9	LT	839.22
400	287+93.0	93.2	LT	839.14
401	287+75.3	93.0	LT	839.06
402	288+13.8	116.6	LT	
403	287+98.2	156.1	LT	
404	286+34.6	32.0	LT	
405	286+34.7	23.9	LT	
415	288+15.6	122.5	LT	
416	287+63.2	112.0	LT	838.64
417	287+08.5	119.5	LT	
418	287+13.4	128.0	LT	

LEGEND	
	INPLACE SIGNAL POLE
	INPLACE SIGNAL PEDESTAL POLE
	RELOCATE SIGNAL PEDESTAL POLE (BY OTHERS)
	PEDESTRIAN PUSH BUTTON STATION (BY OTHERS)
	CONTROL POINTS AT GUTTER FLOW LINE
	APS PUSH BUTTON STATION
	TRUNCATED DOMES (SEE STANDARD PLATE 7038)
	CONSTRUCT CONCRETE CURB & GUTTER
	BITUMINOUS TREATMENT-SEE TABULATIONS
	X" CURB HEIGHT
	LANDING AREA - 4' X 4' MIN. DIMENSIONS AND MAX 2.0% SLOPE IN ALL DIRECTIONS
	INDICATES PEDESTRIAN RAMP - SLOPE SHALL BE BETWEEN 5.0% MINIMUM AND 8.3% MAXIMUM IN THE DIRECTION SHOWN AND CROSS SLOPE SHALL NOT EXCEED 2.0%
	INDICATES PEDESTRIAN RAMP - SLOPE SHALL BE GREATER THAN 2.0% AND LESS THAN 5.0% IN THE DIRECTION SHOWN AND CROSS SLOPE SHALL NOT EXCEED 2.0%
	DRAINAGE FLOW ARROW

MODEL: 9 - Intersection Detail Plan  
 USER: kbesser  
 PEN TABLE: T-00326.plantset.tbl  
 FILE: S:\PROJECTS\TRANS\0037\_HennepinCo\T-00326\Road\_Design\Sheets\cctf-00326\_in.dgn  
 PLOT DRIVER: pdf\_bw.pltcf  
 PLOT DATE: 7/22/2013 10:13:39 AM

REV. NO.	DATE	BY	CHK	DESCRIPTION



I HEREBY CERTIFY THAT THIS PLAN, SPECIFICATION, OR REPORT WAS PREPARED BY ME OR UNDER MY DIRECT SUPERVISION AND THAT I AM A DULY LICENSED PROFESSIONAL ENGINEER UNDER THE LAWS OF THE STATE OF MINNESOTA.

*Kelly Besser*  
 NAME: KELLY M. BESSER LIC. NO. 49798 DATE: 07/22/2013

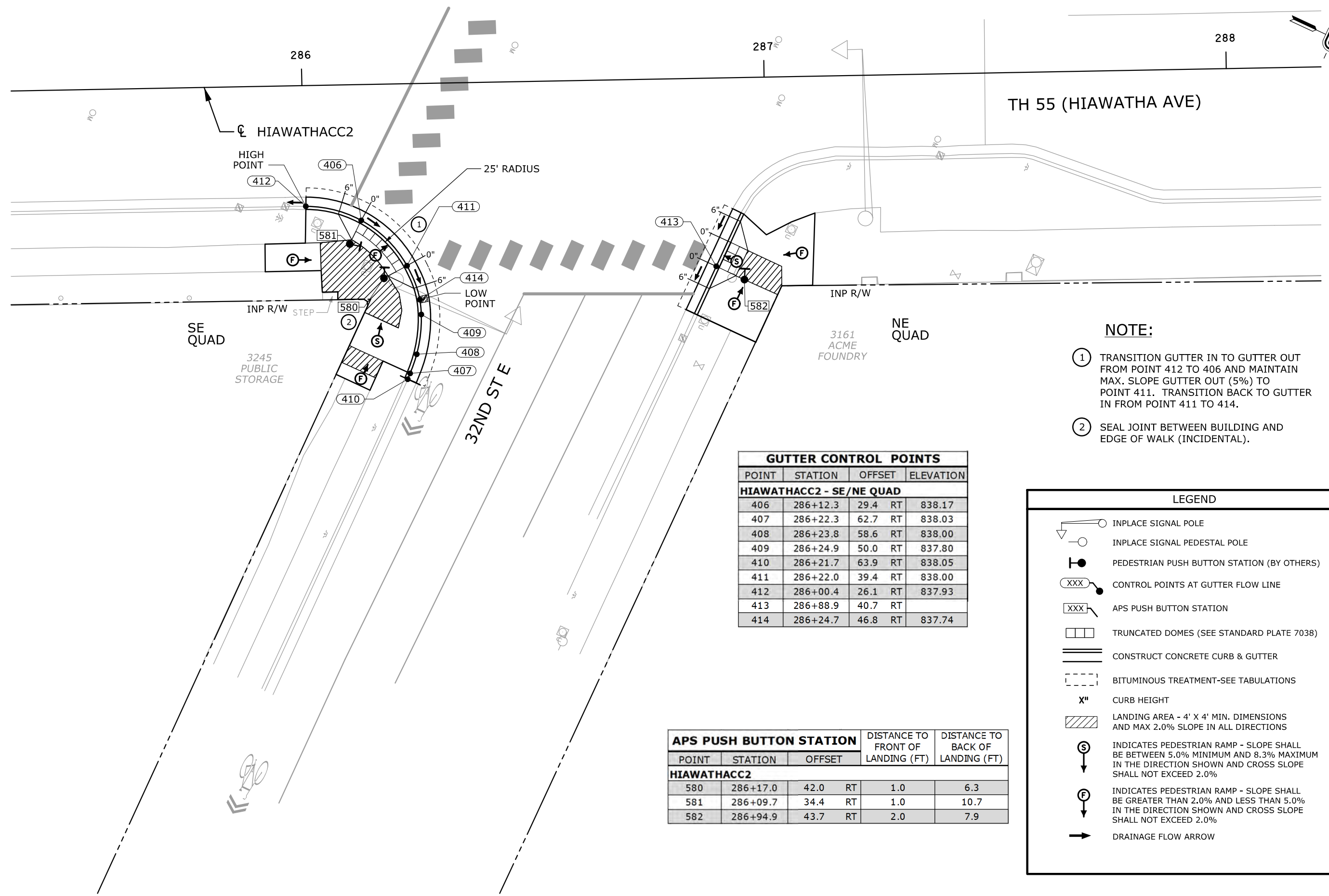
DESIGNED: KMB  
 DRAWN: KJM  
 CHECKED: CJS



INTERSECTION DETAILS  
 32ND ST E - WEST SIDE  
 S.P. 2724-121 (TH 55)  
 C.P. 1001598  
 PLAN PAGE 9 of 12

SHEET  
 79  
 OF  
 88

USER: kbesser  
 PEN TABLE: T-00326.plantset.tbl  
 FILE: S:\PROJECTS\TRANS\0037\_HennepinCo\T-00326\Road\_Design\Sheets\cctf-00326\_in.dgn  
 MODEL: 10 - Intersection Detail Plan  
 PLOT DRIVER: pdf\_bw.pltcf  
 PLOT DATE: 7/22/2013 10:13:41 AM



**NOTE:**

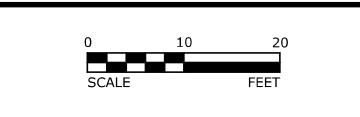
- ① TRANSITION GUTTER IN TO GUTTER OUT FROM POINT 412 TO 406 AND MAINTAIN MAX. SLOPE GUTTER OUT (5%) TO POINT 411. TRANSITION BACK TO GUTTER IN FROM POINT 411 TO 414.
- ② SEAL JOINT BETWEEN BUILDING AND EDGE OF WALK (INCIDENTAL).

GUTTER CONTROL POINTS				
POINT	STATION	OFFSET		ELEVATION
<b>HIAWATHACC2 - SE/NE QUAD</b>				
406	286+12.3	29.4	RT	838.17
407	286+22.3	62.7	RT	838.03
408	286+23.8	58.6	RT	838.00
409	286+24.9	50.0	RT	837.80
410	286+21.7	63.9	RT	838.05
411	286+22.0	39.4	RT	838.00
412	286+00.4	26.1	RT	837.93
413	286+88.9	40.7	RT	
414	286+24.7	46.8	RT	837.74

APS PUSH BUTTON STATION					DISTANCE TO FRONT OF LANDING (FT)	DISTANCE TO BACK OF LANDING (FT)
POINT	STATION	OFFSET				
<b>HIAWATHACC2</b>						
580	286+17.0	42.0	RT		1.0	6.3
581	286+09.7	34.4	RT		1.0	10.7
582	286+94.9	43.7	RT		2.0	7.9

LEGEND	
	INPLACE SIGNAL POLE
	INPLACE SIGNAL PEDESTAL POLE
	PEDESTRIAN PUSH BUTTON STATION (BY OTHERS)
	CONTROL POINTS AT GUTTER FLOW LINE
	APS PUSH BUTTON STATION
	TRUNCATED DOMES (SEE STANDARD PLATE 7038)
	CONSTRUCT CONCRETE CURB & GUTTER
	BITUMINOUS TREATMENT-SEE TABULATIONS
	X" CURB HEIGHT
	LANDING AREA - 4' X 4' MIN. DIMENSIONS AND MAX 2.0% SLOPE IN ALL DIRECTIONS
	INDICATES PEDESTRIAN RAMP - SLOPE SHALL BE BETWEEN 5.0% MINIMUM AND 8.3% MAXIMUM IN THE DIRECTION SHOWN AND CROSS SLOPE SHALL NOT EXCEED 2.0%
	INDICATES PEDESTRIAN RAMP - SLOPE SHALL BE GREATER THAN 2.0% AND LESS THAN 5.0% IN THE DIRECTION SHOWN AND CROSS SLOPE SHALL NOT EXCEED 2.0%
	DRAINAGE FLOW ARROW

REV. NO.	DATE	BY	CHK	DESCRIPTION



I HEREBY CERTIFY THAT THIS PLAN, SPECIFICATION, OR REPORT WAS PREPARED BY ME OR UNDER MY DIRECT SUPERVISION AND THAT I AM A DULY LICENSED PROFESSIONAL ENGINEER UNDER THE LAWS OF THE STATE OF MINNESOTA.

*Kelly Besser*

NAME: KELLY M. BESSER      LIC. NO. 49798      DATE: 07/22/2013

DESIGNED: KMB  
 DRAWN: KJM  
 CHECKED: CJS



INTERSECTION DETAILS  
 32ND ST E - EAST SIDE  
 S.P. 2724-121 (TH 55)  
 C.P. 1001598

PLAN PAGE 10 of 12

SHEET 80 OF 88