

USER: kbesser  
 FILE: S:\PROJECTS\TRANS\0037\_Hennepin\0037\_Hennepin\0037\_Road\_Design\Sheets\cct-00326\_in.dgn  
 MODEL: 5 - Intersection Detail Plan  
 PEN TABLE: T-00326.plantset.tbl  
 PLOT DATE: 7/22/2013 10:13:32 AM  
 PLOT DRIVER: pdf\_bw.pltcfq

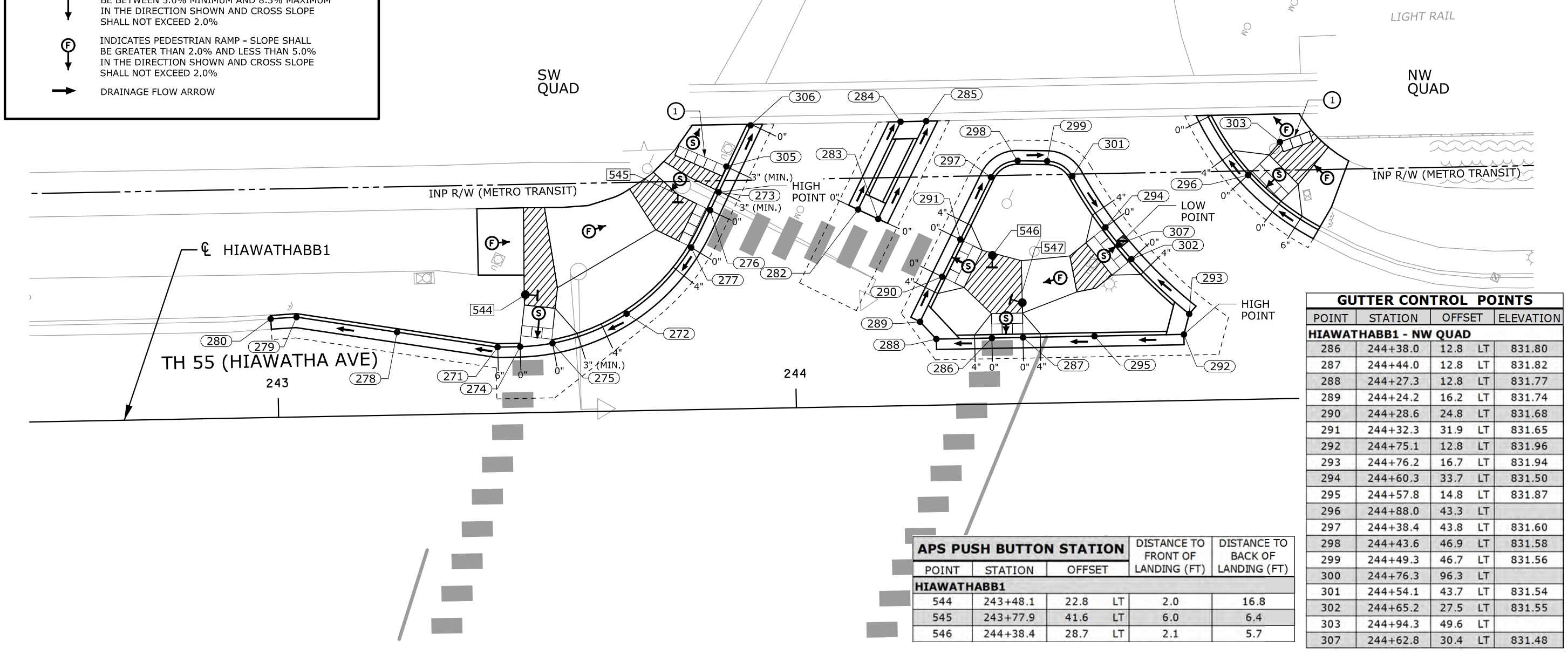
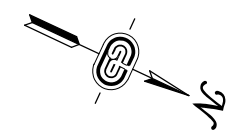
LEGEND	
	INPLACE SIGNAL POLE
	INPLACE SIGNAL PEDESTAL POLE
	PEDESTRIAN PUSH BUTTON STATION (BY OTHERS)
	PEDESTRIAN PUSH BUTTON (BY OTHERS)
	CONTROL POINTS AT GUTTER FLOW LINE
	APS PUSH BUTTON STATION
	TRUNCATED DOMES (SEE STANDARD PLATE 7038)
	CONSTRUCT CONCRETE CURB & GUTTER
	BITUMINOUS TREATMENT-SEE TABULATIONS
	CURB HEIGHT
	LANDING AREA - 4' X 4' MIN. DIMENSIONS AND MAX 2.0% SLOPE IN ALL DIRECTIONS
	INDICATES PEDESTRIAN RAMP - SLOPE SHALL BE BETWEEN 5.0% MINIMUM AND 8.3% MAXIMUM IN THE DIRECTION SHOWN AND CROSS SLOPE SHALL NOT EXCEED 2.0%
	INDICATES PEDESTRIAN RAMP - SLOPE SHALL BE GREATER THAN 2.0% AND LESS THAN 5.0% IN THE DIRECTION SHOWN AND CROSS SLOPE SHALL NOT EXCEED 2.0%
	DRAINAGE FLOW ARROW

GUTTER CONTROL POINTS				
POINT	STATION	OFFSET		ELEVATION
<b>HIAWATHABB1 - SW QUAD</b>				
271	243+42.5	12.8	LT	831.32
272	243+67.5	18.8	LT	831.45
273	243+85.8	41.9	LT	831.60
274	243+46.9	12.8	LT	831.34
275	243+53.1	13.3	LT	831.37
276	243+84.1	38.5	LT	831.58
277	243+80.3	31.3	LT	831.54
278	243+23.2	16.0	LT	831.22
279	243+03.8	19.3	LT	831.14
280	242+98.8	19.0	LT	831.10
281	244+12.0	96.5	LT	
282	244+12.6	38.0	LT	831.60
283	244+16.5	36.2	LT	831.62
284	244+21.1	54.9	LT	831.48
285	244+26.1	54.9	LT	831.50
305	243+87.4	46.8	LT	
306	243+92.2	54.7	LT	831.51

**NOTES:**

① FRONT EDGE OF DETECTABLE WARNINGS FOR LRT LINE SHALL BE PLACED A MINIMUM OF 6 FEET FROM CENTERLINE OF NEAREST RAIL OR 17-19 INCHES FROM THE FACE OF THE PEDESTRIAN GATE ARM.

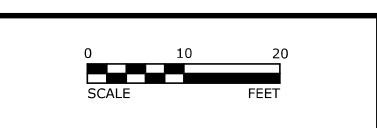
② DOMES CUT INTO WALK FOR LRT DETECTABLE WARNING ONLY. ADJACENT SIDEWALK MAY NOT MEET ALL COMPLIANCY CRITERIA.



GUTTER CONTROL POINTS				
POINT	STATION	OFFSET		ELEVATION
<b>HIAWATHABB1 - NW QUAD</b>				
286	244+38.0	12.8	LT	831.80
287	244+44.0	12.8	LT	831.82
288	244+27.3	12.8	LT	831.77
289	244+24.2	16.2	LT	831.74
290	244+28.6	24.8	LT	831.68
291	244+32.3	31.9	LT	831.65
292	244+75.1	12.8	LT	831.96
293	244+76.2	16.7	LT	831.94
294	244+60.3	33.7	LT	831.50
295	244+57.8	14.8	LT	831.87
296	244+88.0	43.3	LT	
297	244+38.4	43.8	LT	831.60
298	244+43.6	46.9	LT	831.58
299	244+49.3	46.7	LT	831.56
300	244+76.3	96.3	LT	
301	244+54.1	43.7	LT	831.54
302	244+65.2	27.5	LT	831.55
303	244+94.3	49.6	LT	
307	244+62.8	30.4	LT	831.48

APS PUSH BUTTON STATION					
POINT	STATION	OFFSET		DISTANCE TO FRONT OF LANDING (FT)	DISTANCE TO BACK OF LANDING (FT)
<b>HIAWATHABB1</b>					
544	243+48.1	22.8	LT	2.0	16.8
545	243+77.9	41.6	LT	6.0	6.4
546	244+38.4	28.7	LT	2.1	5.7

REV. NO.	DATE	BY	CHK	DESCRIPTION



I HEREBY CERTIFY THAT THIS PLAN, SPECIFICATION, OR REPORT WAS PREPARED BY ME OR UNDER MY DIRECT SUPERVISION AND THAT I AM A DULY LICENSED PROFESSIONAL ENGINEER UNDER THE LAWS OF THE STATE OF MINNESOTA.

*Kelly Besser*

NAME: KELLY M. BESSER LIC. NO. 49798 DATE: 07/22/2013

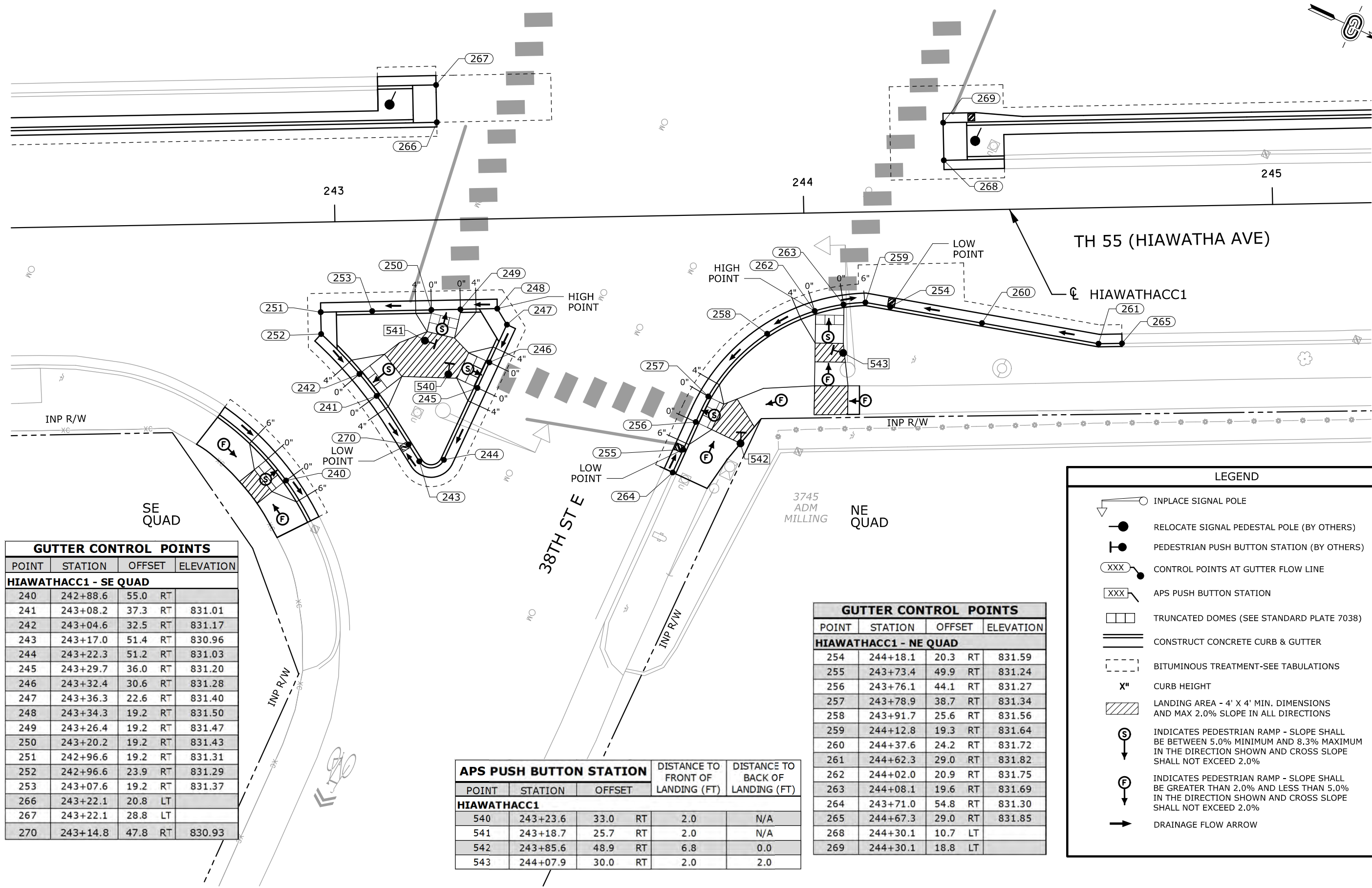
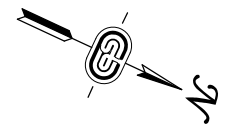
DESIGNED: KMB  
 DRAWN: KJM  
 CHECKED: CJS



INTERSECTION DETAILS  
 38TH ST E - WEST SIDE  
 S.P. 2724-121 (TH 55)  
 C.P. 1001598

PLAN PAGE 5 of 12

SHEET  
 75  
 OF  
 88



GUTTER CONTROL POINTS			
POINT	STATION	OFFSET	ELEVATION
<b>HIAWATHACC1 - SE QUAD</b>			
240	242+88.6	55.0 RT	
241	243+08.2	37.3 RT	831.01
242	243+04.6	32.5 RT	831.17
243	243+17.0	51.4 RT	830.96
244	243+22.3	51.2 RT	831.03
245	243+29.7	36.0 RT	831.20
246	243+32.4	30.6 RT	831.28
247	243+36.3	22.6 RT	831.40
248	243+34.3	19.2 RT	831.50
249	243+26.4	19.2 RT	831.47
250	243+20.2	19.2 RT	831.43
251	242+96.6	19.2 RT	831.31
252	242+96.6	23.9 RT	831.29
253	243+07.6	19.2 RT	831.37
266	243+22.1	20.8 LT	
267	243+22.1	28.8 LT	
270	243+14.8	47.8 RT	830.93

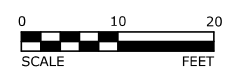
APS PUSH BUTTON STATION					
POINT	STATION	OFFSET	DISTANCE TO FRONT OF LANDING (FT)	DISTANCE TO BACK OF LANDING (FT)	
<b>HIAWATHACC1</b>					
540	243+23.6	33.0 RT	2.0	N/A	
541	243+18.7	25.7 RT	2.0	N/A	
542	243+85.6	48.9 RT	6.8	0.0	
543	244+07.9	30.0 RT	2.0	2.0	

GUTTER CONTROL POINTS			
POINT	STATION	OFFSET	ELEVATION
<b>HIAWATHACC1 - NE QUAD</b>			
254	244+18.1	20.3 RT	831.59
255	243+73.4	49.9 RT	831.24
256	243+76.1	44.1 RT	831.27
257	243+78.9	38.7 RT	831.34
258	243+91.7	25.6 RT	831.56
259	244+12.8	19.3 RT	831.64
260	244+37.6	24.2 RT	831.72
261	244+62.3	29.0 RT	831.82
262	244+02.0	20.9 RT	831.75
263	244+08.1	19.6 RT	831.69
264	243+71.0	54.8 RT	831.30
265	244+67.3	29.0 RT	831.85
268	244+30.1	10.7 LT	
269	244+30.1	18.8 LT	

LEGEND	
	INPLACE SIGNAL POLE
	RELOCATE SIGNAL PEDESTAL POLE (BY OTHERS)
	PEDESTRIAN PUSH BUTTON STATION (BY OTHERS)
	CONTROL POINTS AT GUTTER FLOW LINE
	APS PUSH BUTTON STATION
	TRUNCATED DOMES (SEE STANDARD PLATE 7038)
	CONSTRUCT CONCRETE CURB & GUTTER
	BITUMINOUS TREATMENT-SEE TABULATIONS
	X" CURB HEIGHT
	LANDING AREA - 4' X 4' MIN. DIMENSIONS AND MAX 2.0% SLOPE IN ALL DIRECTIONS
	INDICATES PEDESTRIAN RAMP - SLOPE SHALL BE BETWEEN 5.0% MINIMUM AND 8.3% MAXIMUM IN THE DIRECTION SHOWN AND CROSS SLOPE SHALL NOT EXCEED 2.0%
	INDICATES PEDESTRIAN RAMP - SLOPE SHALL BE GREATER THAN 2.0% AND LESS THAN 5.0% IN THE DIRECTION SHOWN AND CROSS SLOPE SHALL NOT EXCEED 2.0%
	DRAINAGE FLOW ARROW

USER: kbesser  
 MODEL: 6 - Intersection Detail Plan  
 PEN TABLE: T-00326.plantset.tbl  
 FILE: S:\PROJECTS\TRANS\0037\_HennepinCo\T-00326\Road\_Design\Sheets\crt-00326\_in.dgn  
 PLOT DRIVER: pdf\_bw.plt  
 PLOT DATE: 7/22/2013 10:13:34 AM

REV. NO.	DATE	BY	CHK	DESCRIPTION



I HEREBY CERTIFY THAT THIS PLAN, SPECIFICATION, OR REPORT WAS PREPARED BY ME OR UNDER MY DIRECT SUPERVISION AND THAT I AM A DULY LICENSED PROFESSIONAL ENGINEER UNDER THE LAWS OF THE STATE OF MINNESOTA.

*Kelly Besser*  
 NAME: KELLY M. BESSER LIC. NO. 49798 DATE: 07/22/2013

DESIGNED: KMB  
 DRAWN: KJM  
 CHECKED: CJS



INTERSECTION DETAILS  
 38TH ST E - EAST SIDE  
 S.P. 2724-121 (TH 55)  
 C.P. 1001598

SHEET 76 OF 88  
 PLAN PAGE 6 of 12