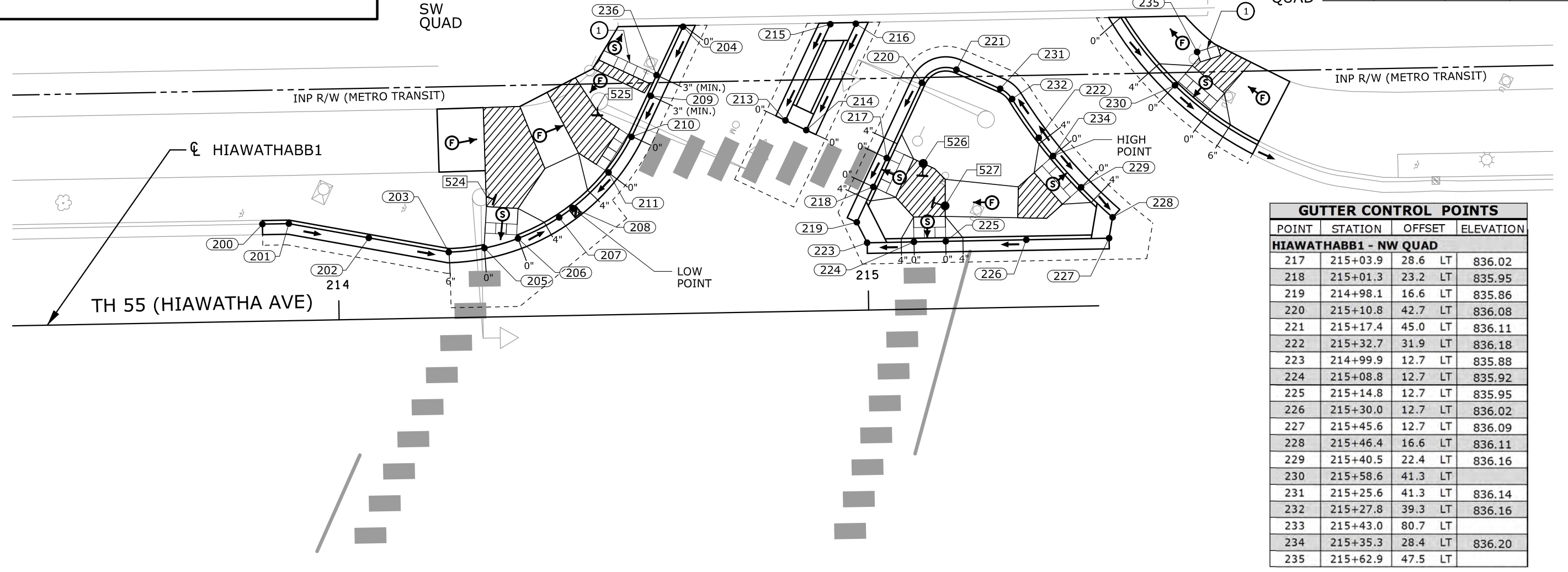


LEGEND	
	INPLACE SIGNAL POLE
	INPLACE SIGNAL PEDESTAL POLE
	PEDESTRIAN PUSH BUTTON STATION (BY OTHERS)
	PEDESTRIAN PUSH BUTTON (BY OTHERS)
	CONTROL POINTS AT GUTTER FLOW LINE
	APS PUSH BUTTON STATION
	TRUNCATED DOMES (SEE STANDARD PLATE 7038)
	CONSTRUCT CONCRETE CURB & GUTTER
	BITUMINOUS TREATMENT-SEE TABULATIONS
	CURB HEIGHT
	LANDING AREA - 4' X 4' MIN. DIMENSIONS AND MAX 2.0% SLOPE IN ALL DIRECTIONS
	INDICATES PEDESTRIAN RAMP - SLOPE SHALL BE BETWEEN 5.0% MINIMUM AND 8.3% MAXIMUM IN THE DIRECTION SHOWN AND CROSS SLOPE SHALL NOT EXCEED 2.0%
	INDICATES PEDESTRIAN RAMP - SLOPE SHALL BE GREATER THAN 2.0% AND LESS THAN 5.0% IN THE DIRECTION SHOWN AND CROSS SLOPE SHALL NOT EXCEED 2.0%
	DRAINAGE FLOW ARROW

- NOTES:**
- FRONT EDGE OF DETECTABLE WARNINGS FOR LRT LINE SHALL BE PLACED A MINIMUM OF 6 FEET FROM CENTERLINE OF NEAREST RAIL OR 17-19 INCHES FROM THE FACE OF THE PEDESTRIAN GATE ARM.
  - DOMES CUT INTO WALK FOR LRT DETECTABLE WARNING ONLY. ADJACENT SIDEWALK MAY NOT MEET ALL COMPLIANCY CRITERIA.

APS PUSH BUTTON STATION			DISTANCE TO FRONT OF LANDING (FT)	DISTANCE TO BACK OF LANDING (FT)
POINT	STATION	OFFSET		
<b>HIAWATHABB1</b>				
524	214+28.3	22.7 LT	1.7	16.9
525	214+49.5	39.2 LT	8.0	6.0
526	215+10.8	27.5 LT	2.0	2.4
527	215+14.8	19.4 LT	2.0	5.0

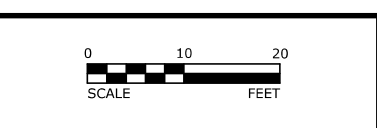
GUTTER CONTROL POINTS				
POINT	STATION	OFFSET		ELEVATION
<b>HIAWATHABB1 - SW QUAD</b>				
200	213+85.8	18.3 LT		835.94
201	213+90.8	18.3 LT		835.92
202	214+05.9	15.4 LT		835.90
203	214+20.9	12.4 LT		835.85
204	214+65.9	54.1 LT		836.08
205	214+27.7	13.0 LT		835.83
206	214+34.0	14.7 LT		835.80
207	214+41.9	18.5 LT		835.77
208	214+44.4	20.3 LT		835.76
209	214+59.6	41.2 LT		835.97
210	214+55.8	33.5 LT		835.90
211	214+51.4	26.9 LT		835.83
212	214+73.1	80.8 LT		
213	214+84.9	36.1 LT		835.80
214	214+88.8	34.2 LT		835.78
215	214+93.7	54.1 LT		835.95
216	214+98.6	54.1 LT		835.95
236	214+60.8	45.1 LT		



GUTTER CONTROL POINTS				
POINT	STATION	OFFSET		ELEVATION
<b>HIAWATHABB1 - NW QUAD</b>				
217	215+03.9	28.6 LT		836.02
218	215+01.3	23.2 LT		835.95
219	214+98.1	16.6 LT		835.86
220	215+10.8	42.7 LT		836.08
221	215+17.4	45.0 LT		836.11
222	215+32.7	31.9 LT		836.18
223	214+99.9	12.7 LT		835.88
224	215+08.8	12.7 LT		835.92
225	215+14.8	12.7 LT		835.95
226	215+30.0	12.7 LT		836.02
227	215+45.6	12.7 LT		836.09
228	215+46.4	16.6 LT		836.11
229	215+40.5	22.4 LT		836.16
230	215+58.6	41.3 LT		
231	215+25.6	41.3 LT		836.14
232	215+27.8	39.3 LT		836.16
233	215+43.0	80.7 LT		
234	215+35.3	28.4 LT		836.20
235	215+62.9	47.5 LT		

USER: kbesser  
 MODEL: 3 - Intersection Detail Plan  
 PEN TABLE: T-00326.plantset.tbl  
 FILE: S:\PROJECTS\TRANS\0037\_HennepinCo\T-00326\Road\_Design\Sheets\crt-00326\_in.dgn  
 PLOT DRIVER: pdf\_bw.plt  
 PLOT DATE: 7/22/2013 10:13:28 AM

REV. NO.	DATE	BY	CHK	DESCRIPTION



I HEREBY CERTIFY THAT THIS PLAN, SPECIFICATION, OR REPORT WAS PREPARED BY ME OR UNDER MY DIRECT SUPERVISION AND THAT I AM A DULY LICENSED PROFESSIONAL ENGINEER UNDER THE LAWS OF THE STATE OF MINNESOTA.

*Kelly Besser*  
 NAME: KELLY M. BESSER LIC. NO. 49798 DATE: 07/22/2013

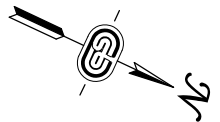
DESIGNED: KMB  
 DRAWN: KJM  
 CHECKED: CJS



INTERSECTION DETAILS  
 42ND ST E - WEST SIDE  
 S.P. 2724-121 (TH 55)  
 C.P. 1001598

PLAN PAGE 3 of 12

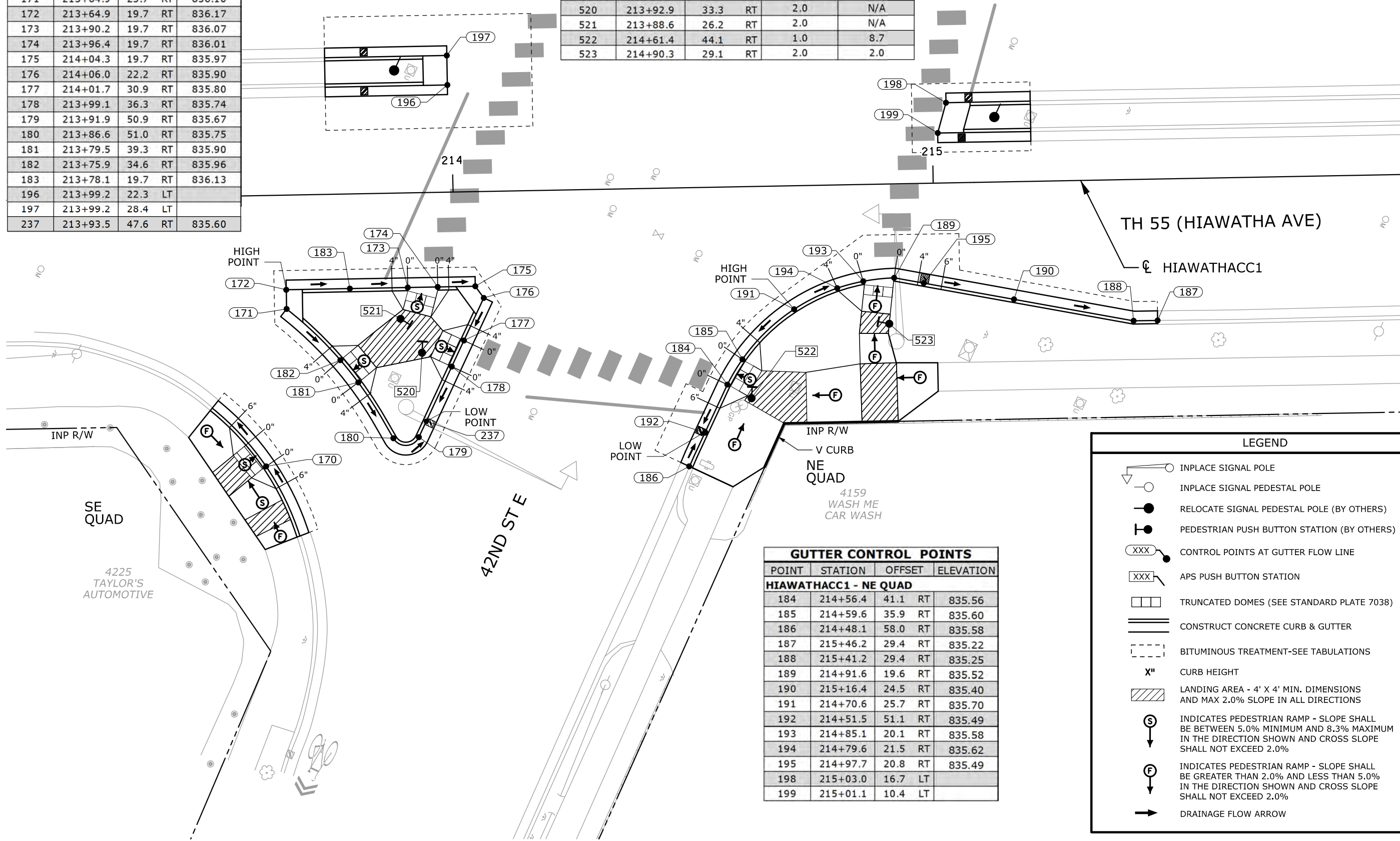
SHEET 73 OF 88



GUTTER CONTROL POINTS				
POINT	STATION	OFFSET		ELEVATION
<b>HIAWATHACC1 - SE QUAD</b>				
170	213+60.0	56.4	RT	
171	213+64.9	23.7	RT	836.10
172	213+64.9	19.7	RT	836.17
173	213+90.2	19.7	RT	836.07
174	213+96.4	19.7	RT	836.01
175	214+04.3	19.7	RT	835.97
176	214+06.0	22.2	RT	835.90
177	214+01.7	30.9	RT	835.80
178	213+99.1	36.3	RT	835.74
179	213+91.9	50.9	RT	835.67
180	213+86.6	51.0	RT	835.75
181	213+79.5	39.3	RT	835.90
182	213+75.9	34.6	RT	835.96
183	213+78.1	19.7	RT	836.13
196	213+99.2	22.3	LT	
197	213+99.2	28.4	LT	
237	213+93.5	47.6	RT	835.60

APS PUSH BUTTON STATION				DISTANCE TO FRONT OF LANDING (FT)	DISTANCE TO BACK OF LANDING (FT)
POINT	STATION	OFFSET			
<b>HIAWATHACC1</b>					
520	213+92.9	33.3	RT	2.0	N/A
521	213+88.6	26.2	RT	2.0	N/A
522	214+61.4	44.1	RT	1.0	8.7
523	214+90.3	29.1	RT	2.0	2.0

MODEL: 4 - Intersection Detail Plan  
 USER: kbesser  
 PEN TABLE: T-00326.plantset.tbl  
 FILE: S:\PROJECTS\TRANS\0037\_HennepinCo\T-00326\Road\_Design\Sheets\crt-00326.in.dgn  
 PLOT DRIVER: pdf\_bw.plt  
 PLOT DATE: 7/22/2013 10:13:30 AM

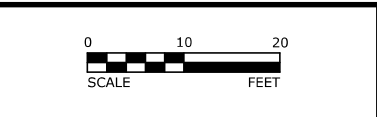


GUTTER CONTROL POINTS				
POINT	STATION	OFFSET		ELEVATION
<b>HIAWATHACC1 - NE QUAD</b>				
184	214+56.4	41.1	RT	835.56
185	214+59.6	35.9	RT	835.60
186	214+48.1	58.0	RT	835.58
187	215+46.2	29.4	RT	835.22
188	215+41.2	29.4	RT	835.25
189	214+91.6	19.6	RT	835.52
190	215+16.4	24.5	RT	835.40
191	214+70.6	25.7	RT	835.70
192	214+51.5	51.1	RT	835.49
193	214+85.1	20.1	RT	835.58
194	214+79.6	21.5	RT	835.62
195	214+97.7	20.8	RT	835.49
198	215+03.0	16.7	LT	
199	215+01.1	10.4	LT	

**LEGEND**

- INPLACE SIGNAL POLE
- INPLACE SIGNAL PEDESTAL POLE
- RELOCATE SIGNAL PEDESTAL POLE (BY OTHERS)
- PEDESTRIAN PUSH BUTTON STATION (BY OTHERS)
- CONTROL POINTS AT GUTTER FLOW LINE
- APS PUSH BUTTON STATION
- TRUNCATED DOMES (SEE STANDARD PLATE 7038)
- CONSTRUCT CONCRETE CURB & GUTTER
- BITUMINOUS TREATMENT-SEE TABULATIONS
- CURB HEIGHT
- LANDING AREA - 4' X 4' MIN. DIMENSIONS AND MAX 2.0% SLOPE IN ALL DIRECTIONS
- INDICATES PEDESTRIAN RAMP - SLOPE SHALL BE BETWEEN 5.0% MINIMUM AND 8.3% MAXIMUM IN THE DIRECTION SHOWN AND CROSS SLOPE SHALL NOT EXCEED 2.0%
- INDICATES PEDESTRIAN RAMP - SLOPE SHALL BE GREATER THAN 2.0% AND LESS THAN 5.0% IN THE DIRECTION SHOWN AND CROSS SLOPE SHALL NOT EXCEED 2.0%
- DRAINAGE FLOW ARROW

REV. NO.	DATE	BY	CHK	DESCRIPTION



I HEREBY CERTIFY THAT THIS PLAN, SPECIFICATION, OR REPORT WAS PREPARED BY ME OR UNDER MY DIRECT SUPERVISION AND THAT I AM A DULY LICENSED PROFESSIONAL ENGINEER UNDER THE LAWS OF THE STATE OF MINNESOTA.

*Kelly Besser*

NAME: KELLY M. BESSER      LIC. NO. 49798      DATE: 07/22/2013

DESIGNED: KMB  
 DRAWN: KJM  
 CHECKED: CJS



**INTERSECTION DETAILS**  
 42ND ST E - EAST SIDE  
 S.P. 2724-121 (TH 55)  
 C.P. 1001598

PLAN PAGE 4 of 12

SHEET  
 74  
 OF  
 88