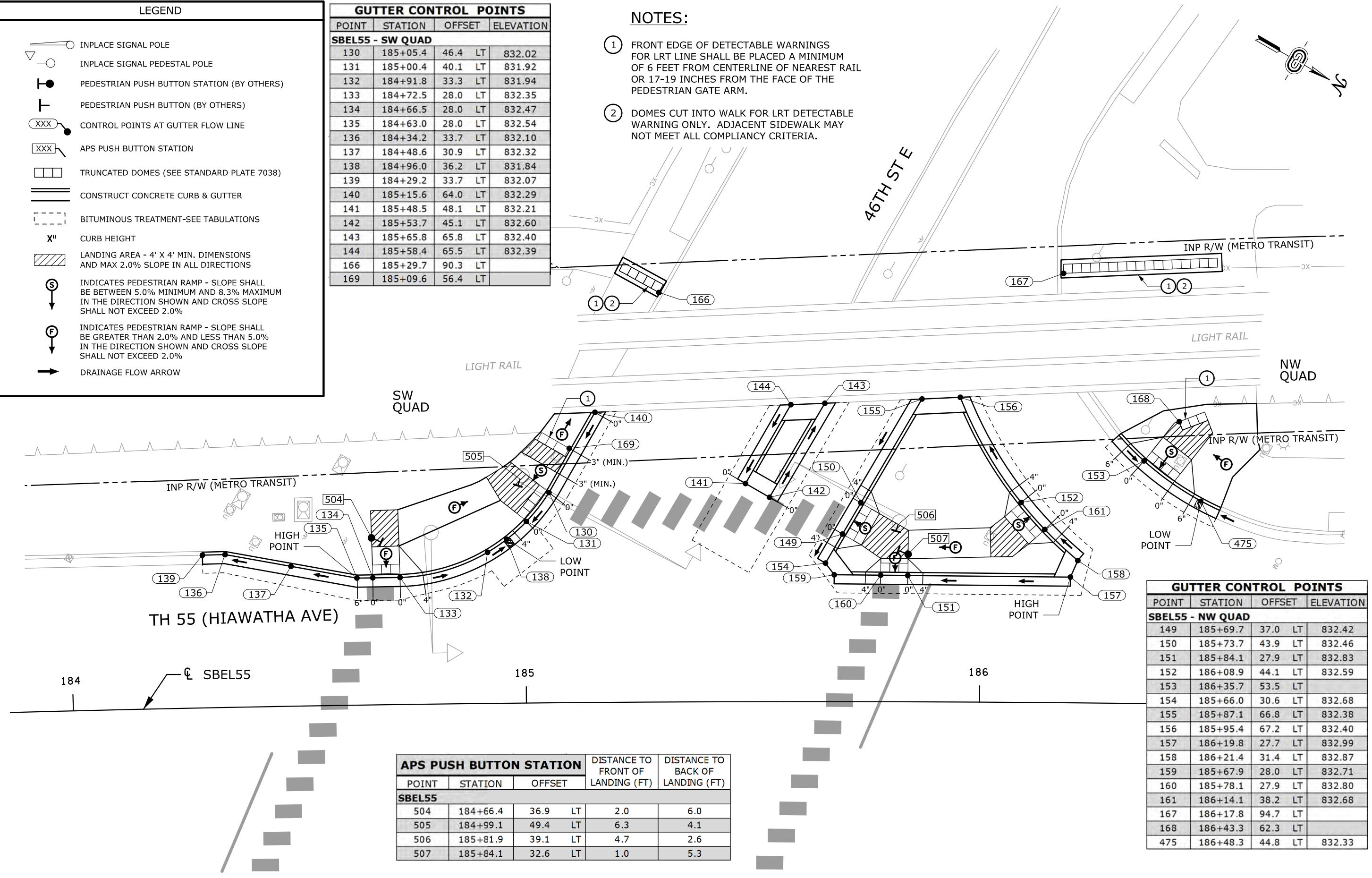


PEN TABLE: T-00326.plantset.tbl  
 USER: kbesser  
 FILE: S:\PROJECTS\TRANS\0037\_HennepinCo\T-00326\Road\_Design\Sheets\crt-00326\_in.dgn  
 MODEL: 1 - Intersection Detail Plan  
 PLOT DRIVER: pdf\_bw.plt  
 PLOT DATE: 7/22/2013 10:13:24 AM

LEGEND	
	INPLACE SIGNAL POLE
	INPLACE SIGNAL PEDESTAL POLE
	PEDESTRIAN PUSH BUTTON STATION (BY OTHERS)
	PEDESTRIAN PUSH BUTTON (BY OTHERS)
	CONTROL POINTS AT GUTTER FLOW LINE
	APS PUSH BUTTON STATION
	TRUNCATED DOMES (SEE STANDARD PLATE 7038)
	CONSTRUCT CONCRETE CURB & GUTTER
	BITUMINOUS TREATMENT-SEE TABULATIONS
	X" CURB HEIGHT
	LANDING AREA - 4' X 4' MIN. DIMENSIONS AND MAX 2.0% SLOPE IN ALL DIRECTIONS
	INDICATES PEDESTRIAN RAMP - SLOPE SHALL BE BETWEEN 5.0% MINIMUM AND 8.3% MAXIMUM IN THE DIRECTION SHOWN AND CROSS SLOPE SHALL NOT EXCEED 2.0%
	INDICATES PEDESTRIAN RAMP - SLOPE SHALL BE GREATER THAN 2.0% AND LESS THAN 5.0% IN THE DIRECTION SHOWN AND CROSS SLOPE SHALL NOT EXCEED 2.0%
	DRAINAGE FLOW ARROW

GUTTER CONTROL POINTS				
POINT	STATION	OFFSET		ELEVATION
<b>SBEL55 - SW QUAD</b>				
130	185+05.4	46.4	LT	832.02
131	185+00.4	40.1	LT	831.92
132	184+91.8	33.3	LT	831.94
133	184+72.5	28.0	LT	832.35
134	184+66.5	28.0	LT	832.47
135	184+63.0	28.0	LT	832.54
136	184+34.2	33.7	LT	832.10
137	184+48.6	30.9	LT	832.32
138	184+96.0	36.2	LT	831.84
139	184+29.2	33.7	LT	832.07
140	185+15.6	64.0	LT	832.29
141	185+48.5	48.1	LT	832.21
142	185+53.7	45.1	LT	832.60
143	185+65.8	65.8	LT	832.40
144	185+58.4	65.5	LT	832.39
166	185+29.7	90.3	LT	
169	185+09.6	56.4	LT	

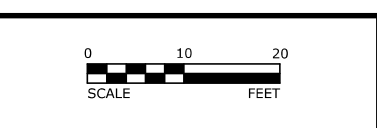
- NOTES:**
- FRONT EDGE OF DETECTABLE WARNINGS FOR LRT LINE SHALL BE PLACED A MINIMUM OF 6 FEET FROM CENTERLINE OF NEAREST RAIL OR 17-19 INCHES FROM THE FACE OF THE PEDESTRIAN GATE ARM.
  - DOMES CUT INTO WALK FOR LRT DETECTABLE WARNING ONLY. ADJACENT SIDEWALK MAY NOT MEET ALL COMPLIANCY CRITERIA.



APS PUSH BUTTON STATION					
POINT	STATION	OFFSET		DISTANCE TO FRONT OF LANDING (FT)	DISTANCE TO BACK OF LANDING (FT)
<b>SBEL55</b>					
504	184+66.4	36.9	LT	2.0	6.0
505	184+99.1	49.4	LT	6.3	4.1
506	185+81.9	39.1	LT	4.7	2.6
507	185+84.1	32.6	LT	1.0	5.3

GUTTER CONTROL POINTS				
POINT	STATION	OFFSET		ELEVATION
<b>SBEL55 - NW QUAD</b>				
149	185+69.7	37.0	LT	832.42
150	185+73.7	43.9	LT	832.46
151	185+84.1	27.9	LT	832.83
152	186+08.9	44.1	LT	832.59
153	186+35.7	53.5	LT	
154	185+66.0	30.6	LT	832.68
155	185+87.1	66.8	LT	832.38
156	185+95.4	67.2	LT	832.40
157	186+19.8	27.7	LT	832.99
158	186+21.4	31.4	LT	832.87
159	185+67.9	28.0	LT	832.71
160	185+78.1	27.9	LT	832.80
161	186+14.1	38.2	LT	832.68
167	186+17.8	94.7	LT	
168	186+43.3	62.3	LT	
475	186+48.3	44.8	LT	832.33

REV. NO.	DATE	BY	CHK	DESCRIPTION

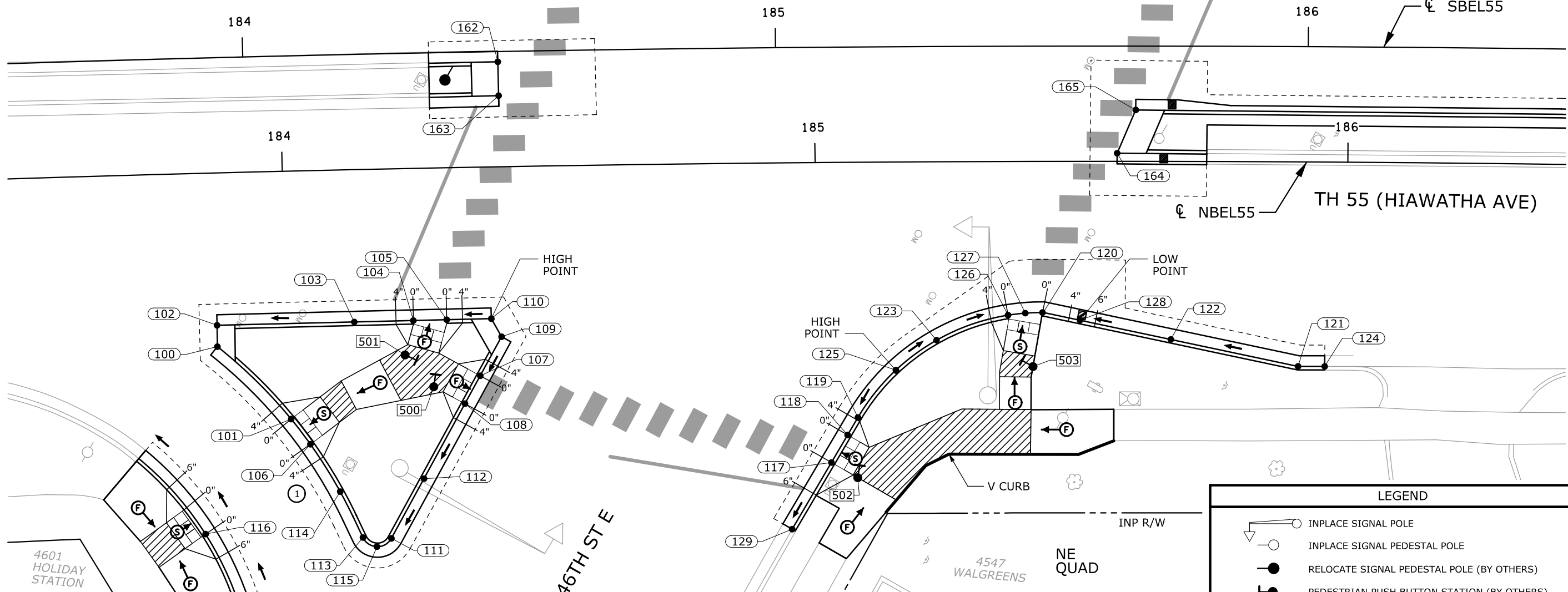
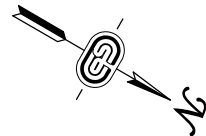


I HEREBY CERTIFY THAT THIS PLAN, SPECIFICATION, OR REPORT WAS PREPARED BY ME OR UNDER MY DIRECT SUPERVISION AND THAT I AM A DULY LICENSED PROFESSIONAL ENGINEER UNDER THE LAWS OF THE STATE OF MINNESOTA.

*Kelly Besser*  
 NAME: KELLY M. BESSER LIC. NO. 49798 DATE: 07/22/2013

DESIGNED: KMB  
 DRAWN: KJM  
 CHECKED: CJS





**NOTE:**  
 ① TRANSITION GUTTER IN TO GUTTER OUT FROM POINT 115 TO 113 AND MAINTAIN GUTTER OUT TO POINT 100.

APS PUSH BUTTON STATION				
POINT	STATION	OFFSET	DISTANCE TO FRONT OF LANDING (FT)	DISTANCE TO BACK OF LANDING (FT)
<b>NBEL55</b>				
500	184+27.6	41.1 RT	2.0	6.7
501	184+22.3	35.0 RT	2.0	4.7
502	185+07.6	59.2 RT	1.0	8.4
503	185+40.8	38.5 RT	2.0	2.0

GUTTER CONTROL POINTS				
POINT	STATION	OFFSET		ELEVATION
<b>NBEL55 - SE QUAD</b>				
100	183+87.0	32.6 RT		831.95
101	184+00.6	46.6 RT		831.85
102	183+87.0	28.6 RT		832.00
103	184+12.9	28.6 RT		832.04
104	184+24.0	28.6 RT		832.10
105	184+30.3	28.5 RT		832.15
106	184+04.1	51.4 RT		831.77
107	184+36.4	39.2 RT		832.10
108	184+33.5	44.4 RT		832.02
109	184+40.6	31.9 RT		832.20
110	184+38.7	28.5 RT		832.26
111	184+19.0	69.4 RT		831.82
112	184+25.4	58.3 RT		831.86
113	184+13.6	69.1 RT		831.78
114	184+09.5	60.4 RT		831.73
115	184+16.2	70.9 RT		831.80
116	183+83.8	67.7 RT		

GUTTER CONTROL POINTS				
POINT	STATION	OFFSET		ELEVATION
<b>NBEL55 - NE QUAD</b>				
117	185+02.6	56.3 RT		832.78
118	185+05.7	51.2 RT		832.82
119	185+07.7	47.9 RT		832.85
120	185+42.6	28.4 RT		832.63
121	185+90.8	38.4 RT		832.86
122	185+66.8	33.4 RT		832.67
123	185+22.6	33.5 RT		832.85
124	185+95.9	38.4 RT		832.89
125	185+14.9	39.1 RT		832.95
126	185+36.1	28.9 RT		832.69
127	185+39.4	28.5 RT		832.66
128	185+49.7	29.8 RT		832.55
129	184+95.1	68.8 RT		832.72
162	184+40.8	19.7 LT		
163	184+40.8	13.4 LT		
164	185+56.7	1.5 LT		
165	185+60.2	9.7 LT		

**LEGEND**

- INPLACE SIGNAL POLE
- INPLACE SIGNAL PEDESTAL POLE
- RELOCATE SIGNAL PEDESTAL POLE (BY OTHERS)
- PEDESTRIAN PUSH BUTTON STATION (BY OTHERS)
- CONTROL POINTS AT GUTTER FLOW LINE
- APS PUSH BUTTON STATION
- TRUNCATED DOMES (SEE STANDARD PLATE 7038)
- CONSTRUCT CONCRETE CURB & GUTTER
- BITUMINOUS TREATMENT-SEE TABULATIONS
- CURB HEIGHT
- LANDING AREA - 4' X 4' MIN. DIMENSIONS AND MAX 2.0% SLOPE IN ALL DIRECTIONS
- INDICATES PEDESTRIAN RAMP - SLOPE SHALL BE BETWEEN 5.0% MINIMUM AND 8.3% MAXIMUM IN THE DIRECTION SHOWN AND CROSS SLOPE SHALL NOT EXCEED 2.0%
- INDICATES PEDESTRIAN RAMP - SLOPE SHALL BE GREATER THAN 2.0% AND LESS THAN 5.0% IN THE DIRECTION SHOWN AND CROSS SLOPE SHALL NOT EXCEED 2.0%
- DRAINAGE FLOW ARROW

USER: kbesser  
 MODEL: 2 - Intersection Detail Plan  
 PEN TABLE: T-00326.plantset.tbl  
 FILE: S:\PROJECTS\TRANS\0037\_HennepinCo\T-00326\Road\_Design\Sheets\crt-00326.in.dgn  
 PLOT DRIVER: pdf\_bw.plt  
 PLOT DATE: 7/22/2013 10:13:26 AM

REV. NO.	DATE	BY	CHK	DESCRIPTION



I HEREBY CERTIFY THAT THIS PLAN, SPECIFICATION, OR REPORT WAS PREPARED BY ME OR UNDER MY DIRECT SUPERVISION AND THAT I AM A DULY LICENSED PROFESSIONAL ENGINEER UNDER THE LAWS OF THE STATE OF MINNESOTA.

*Kelly Besser*  
 NAME: KELLY M. BESSER LIC. NO. 49798 DATE: 07/22/2013

DESIGNED: KMB  
 DRAWN: KJM  
 CHECKED: CJS

